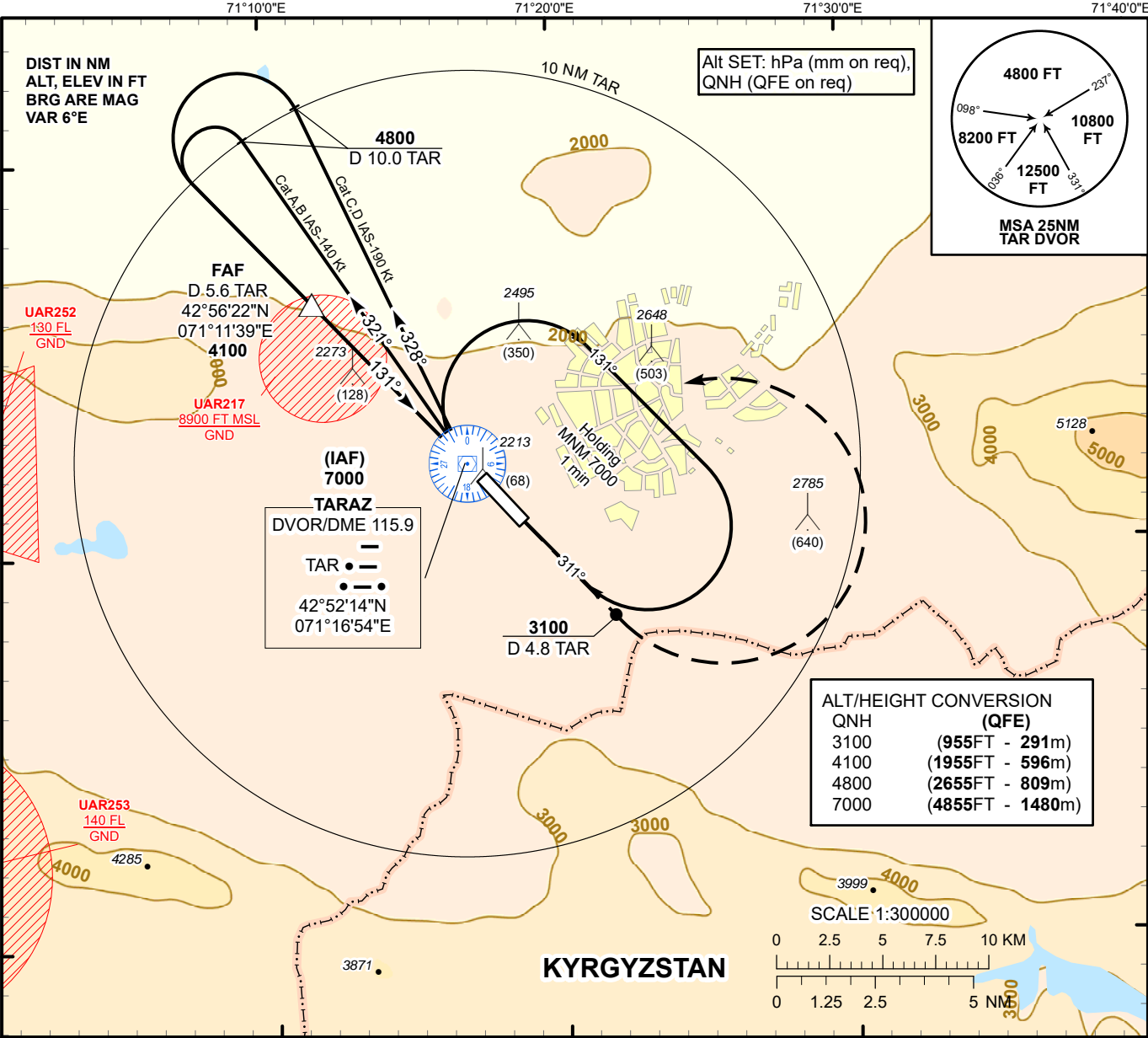


INSTRUMENT APPROACH  
CHART  
ICAO

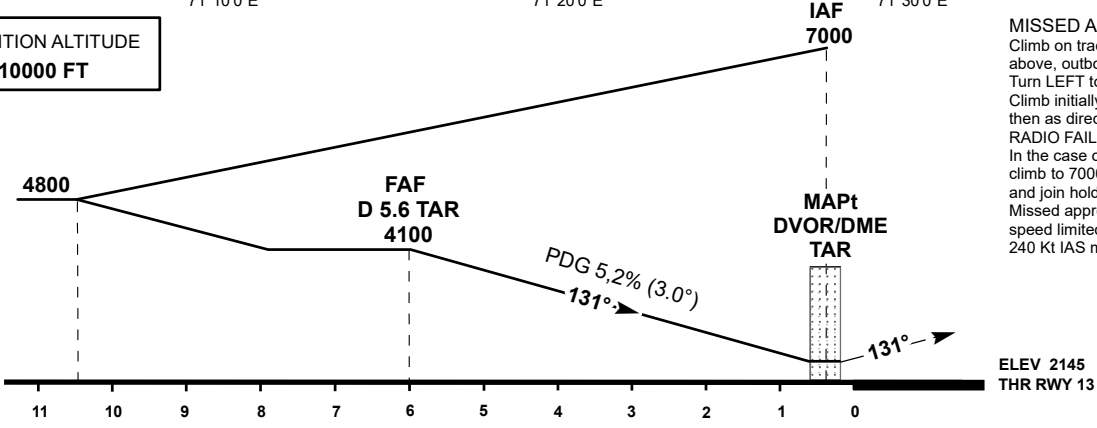
AERODROME ELEV **2190 FT**  
HEIGHTS RELATED TO  
THR RWY 13 ELEV **2145 FT**

TARAZ TOWER 122.1  
TARAZ ATIS (EN) 118.5  
TARAZ ATIS (RU) 127.4

TARAZ  
VOR/DME  
RWY 13



TRANSITION ALTITUDE  
**10000 FT**



**MISSED APPROACH**  
Climb on track 131° to 3100 or above, outbound to 4.8 NM TAR. Turn LEFT to TAR. Climb initially to 4800, then as directed.  
**RADIO FAILURE:**  
In the case of RCF climb to 7000 to TAR and join holding pattern. Missed approach turn speed limited to 240 Kt IAS maximum.

Aircraft Category		A	B	C	D	DIST to THR	NM	6.0	5.0	4.0	3.0	2.0	1.0
Straight-in Approach OCA/H	VOR/DME	2520(380)	2520(380)	2520(380)	2520(380)	DME TAR	NM	5.6	4.6	3.6	2.6	1.6	0.6
						ALTITUDE	FT	4100	3786	3468	3149	2831	2512
						HEIGHT	FT	1955	1641	1323	1004	686	367
Aerodrome Operating Minima MDH ft x RVR(CMV)	VOR/DME					GS	Kt	80	100	120	140	160	180
						Desc Rate( 5.2%)	ft/min	420	530	640	740	850	960
						FAF-MAPt (5.6 NM)	min:sec	4:17	3:25	2:51	2:26	2:08	1:54

CHANGE: OCA/H, obstacles, add ATIS, editorial.

TARAZ (UADD)  
VOR/DME

AERONAUTICAL DATA TABULATION

VOR approach to RWY13 from TAR DVOR/DME	
Fix/point	Coordinates
TRZ DVOR/DME (IAF)	42° 52' 14.0"N 071° 16' 54.1"E
D5.6 TAR (FAF)	42° 56' 22.0"N 071° 11' 39.2"E
THR RWY13	42° 51' 57.40"N 071° 17' 15.14"E
Final approach descent angle is 3.0°	